

“The functioning system”

ORGANICAL

CAD/CAM

High Performance Dental Milling System

From the user to the user – with open interfaces!
Highly productive and economical optimum value for your laboratory.



Organical – the System

The Organical CAD/CAM system is a high performance milling system, used to manufacture dental technical restorations. The system includes the entire machining- and procession technology, starting from the 3Shape Scanner, the self-developed milling software, milling machines up to the most different materials.

Open interfaces provide the compatibility to other systems.



Content

Organical CAD/CAM System.....	Page 2	Organical Milling Machines	Page 10- 13
3Shape Dental 3D Scanner.....	Page 3	Organical Tools	Page 14/15
CAD-Software DentalDesigner	Page 4/5	Organical Blanks	Page 16 - 19
CAM-Software AbutmentDesigner	Page 6/7	Organical Accessories	Page 20/22
CAM-Software OrganicalMill	Page 8/9	Advance Notice	Page 23

*CAD: Computer Aided Design / CAM: Computer Aided Manufacturing

3Shape Dental 3D Scanner

Open and versatile 3D scanning for all dental restoration types

3Shape Dental 3D Scanner

The scanner operation is based on a laser method of sections combined with 2 cameras.

The object to be scanned is moved to all 3 room axes, thereby completely collecting all surface points and undercuts.

Main advantages of the scanner

- Versatility
- Open file formats
- High and consistent levels of accuracy
- Scanning at the push of a button
- Alignment of scanned parts
- Automatic 3D model display from scanned data



Article no. 70-1501

Technical data

- Scanner dimensions: 34 x 29 x 33 cm (w x h x d)
- Weight: 14 kg
- Sensor / Laser: 2 / 1
- Variable data: 3 axes: rotation, translation, tilting
- Supported objects: Stumps, inlay preparations (incl. deep preparations), bridge preparations up to 14 units, antagonists (silicone bite or gypsum), wax-ups (individual or bridge), pontics, models (up to 16 units)
- Scanning computer (incl.): Intel™ Core Duo Processor, 2 GB RAM
- Access: Ethernet (standard TCP/IP net work base), USB-access for PC
- Output format: STL, DCM
- Tension: 110 and 220 V
- International approval of conformity: CE/FCC admitted
- Further Characteristics: Upgradeable to orthodontic functionality

Scanning object	Single stumps and inlay preparations	3-element bridge	Complete gypsum model
Scanning time	approx. 25 sec	3 min	2 min
Areal figure development	approx. 15 sec	1 min	3 min
Data points	150,000	300,000	generally 1,000,000

Please find informations regarding our orthodontic scanners in our special booklet

CAD-Software 3Shape DentalDesigner™

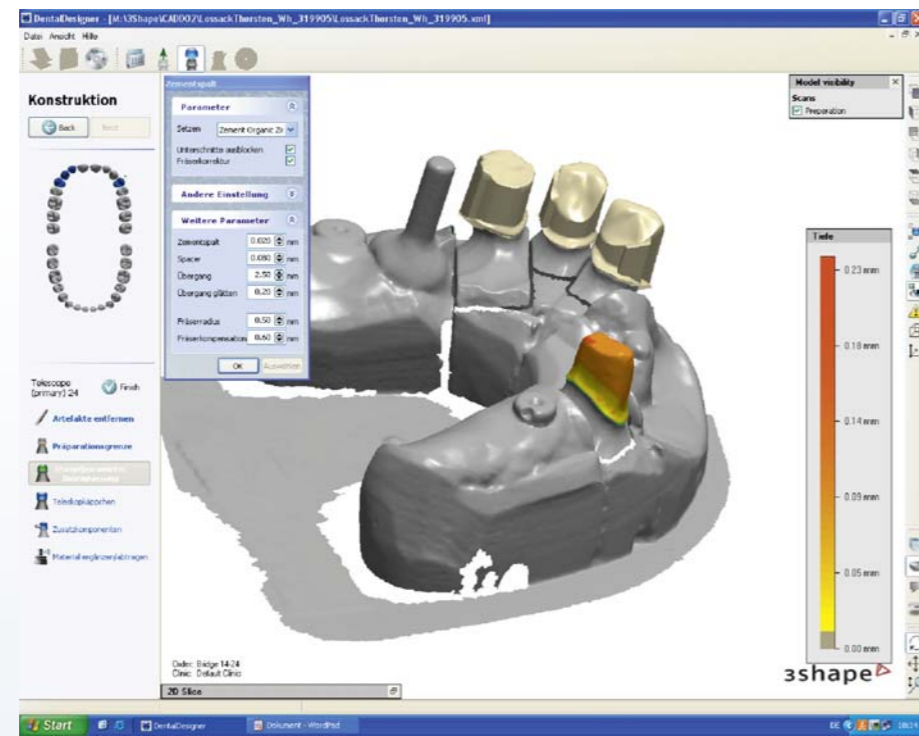
The DentalDesigner™ is a simple and flexible 3D CAD software packet, providing the user with an opportunity for easy and optimal construction of different products.

The user is being guided through all steps of the designing process!

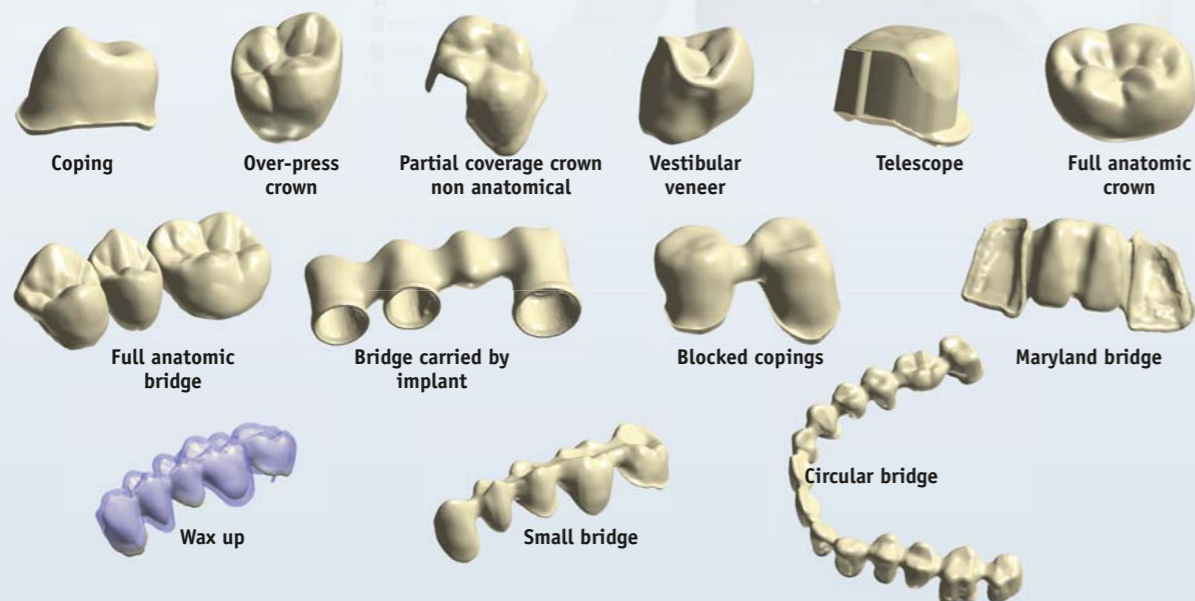
The 3D-files are scanned in STL-format, an open system, which means that sending the data- is neither connected to a particular milling centre nor to a dental laboratory.

Menu guide and setup possibilities

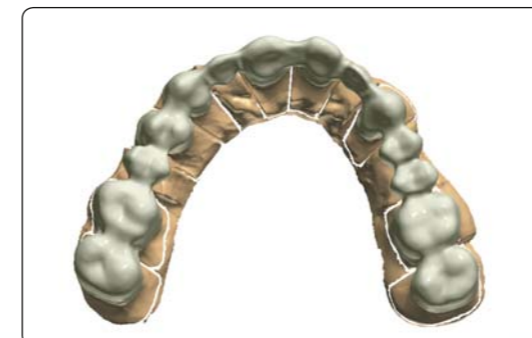
A fully automated and user-friendly serving surface guides the user through the manifold setting possibilities.



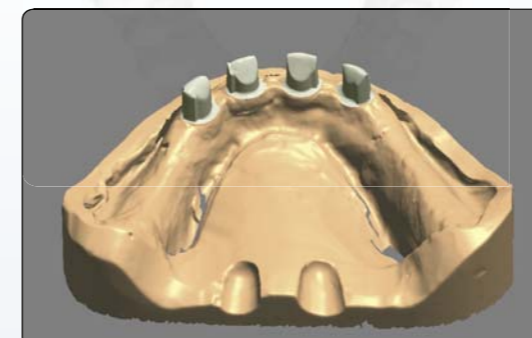
With 3Shape DentalDesigner™ fabricable dental care



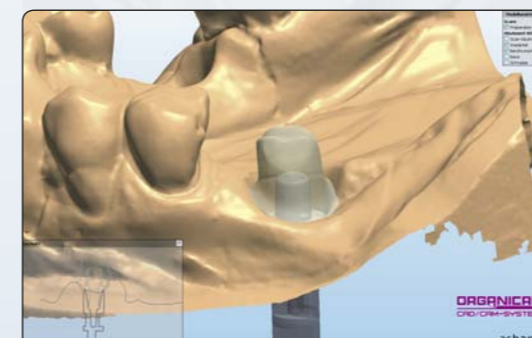
Optimal Construction (CAD)



Circular bridge



Primary telescope crowns after SAE-spark erosion technology



CAD-modelling in the add-on module AbutmentDesigner™

Perfect conversion



Zirconium

CrCoMo with full anatomic occlusal surfaces



Zirconium inner telescopes



Zirconium Abutment on adhesive casing

adhesive casing on implant

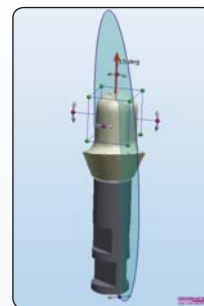
AbutmentDesigner™ add-on module

Exploiting the precision and productivity of 3Shape's dental 3D scanners, 3Shape's AbutmentDesigner™, is an add-on module* for DentalDesigner™ for the creation of completely customized implant abutments, implant bridges and bars.

3Shape's scanning software uses proprietary algorithms for implant position detection and alignment, which allows for the high levels of accuracy required in the manufacturing of abutments and implant bridges.

AbutmentDesigner™ offers a user-friendly interface fully consistent with the workflow of DentalDesigner™, which makes the modeling of complex dental structures easy, efficient and flexible

Features of AbutmentDesigner™



1. Versatility

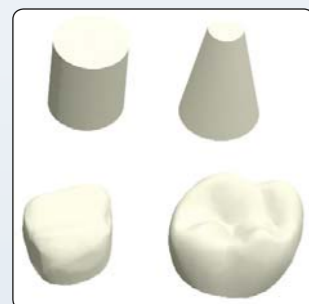
Used with DentalDesigner™, AbutmentDesigner™ allows for the efficient and accurate design of customized abutments combined with several restoration types. Thus, copings and crowns can be modelled to fit abutments and implant bridges at high level of precision and parallelism.

The software tools ensure full control in the design of the abutment's critical parameters: emergence profile, clinical aspect as well as screw opening if relevant.



2. Open library system: create your own implant libraries

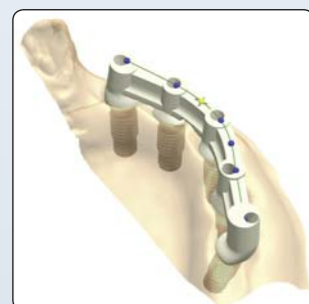
AbutmentDesigner™ makes it possible for the users to import 3D implant kits and create their own libraries to support preferred implants systems. This flexibility ensures that perfectly fitting abutments can be designed for the implants chosen by the dentists.



3. Fully customizable shapes

The user has the opportunity to design customized abutments from multiple library shapes, which can be modified freely.

Users can also create their own bar profiles and anatomies: the high precision of CAD software meets traditional know-how and enhances the user's design freedom and productivity.



4. Complex and combined implant works

With the flexibility of AbutmentDesigner™, accurate implant bridges and bars are perfectly adapted to the patient's situation. The placement overview function makes it very easy to precisely place the connectors on a complete implant bridge or bar framework.



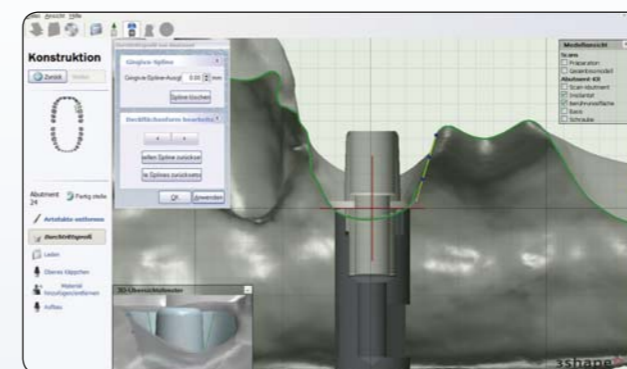
Implant situation



Position detection and adjustment of implants



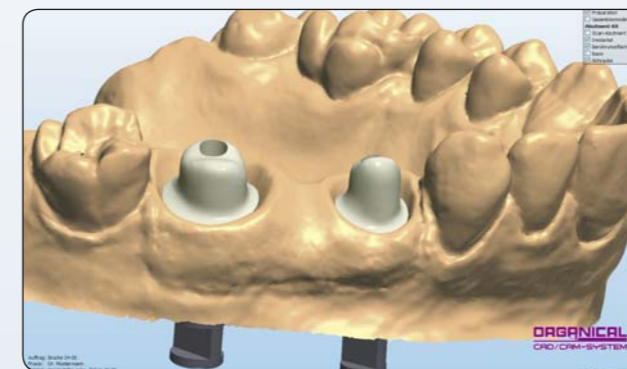
Assembly of scan casing for the scan



Processing of the emergency profile



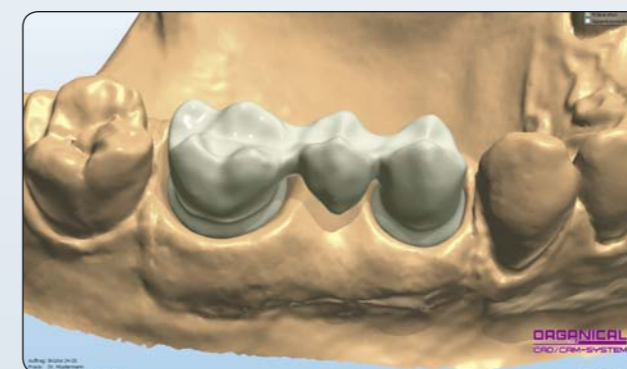
Assembly of the adhesive casings (Medentika) on the implants



Completion of the abutments



Zirconium-abutments on adhesive casings from titanium



Construction of the bridge on the abutments

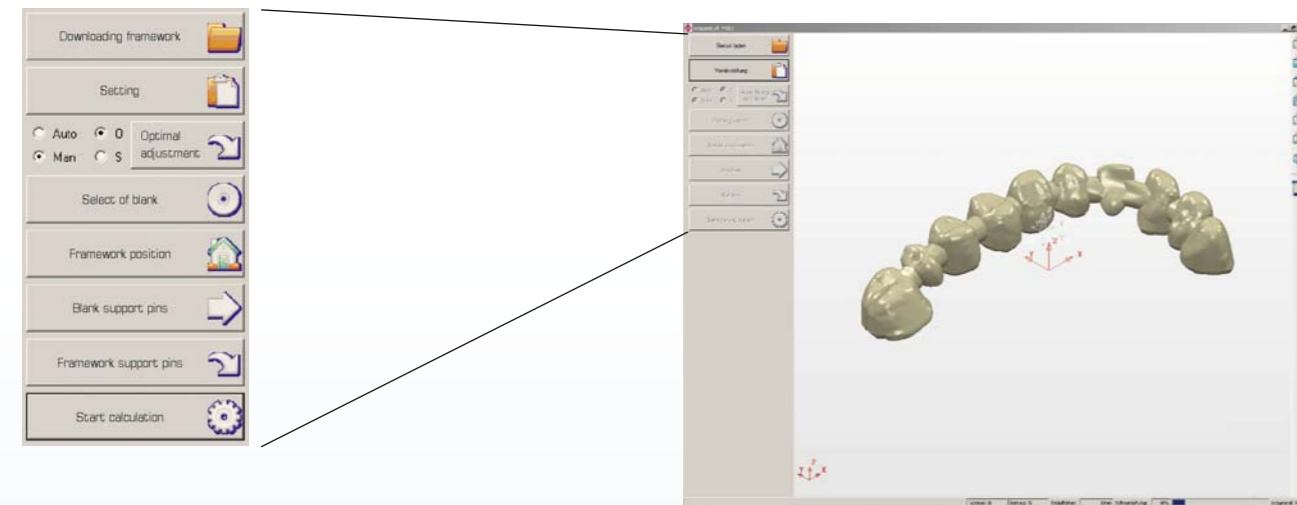


Completed bridge from zirconium on abutments

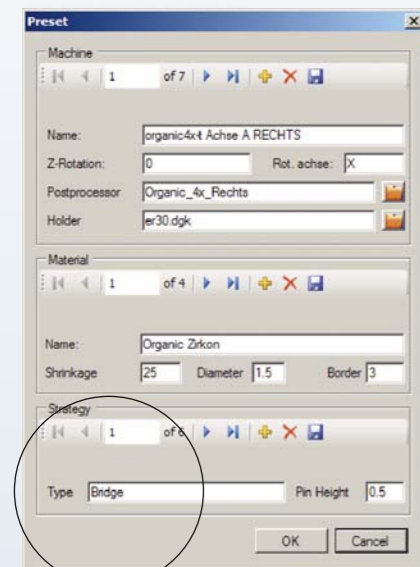
CAM-Software OrganicalMill

OrganicalMill Milling Software

OrganicalMill is a CAM-Software to create data for the milling machine control. With the aid of this software, it is possible to produce various dental products from different types of materials, such as, for instance, zirconium.



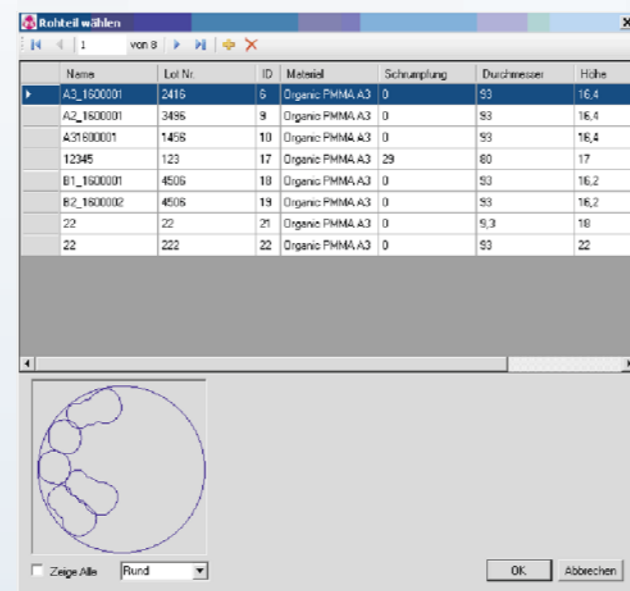
Each single workflow is conformed to the specific dental technical method, which enables the dental technician to easily follow the menu structure as well as handling it.



Setup possibilities

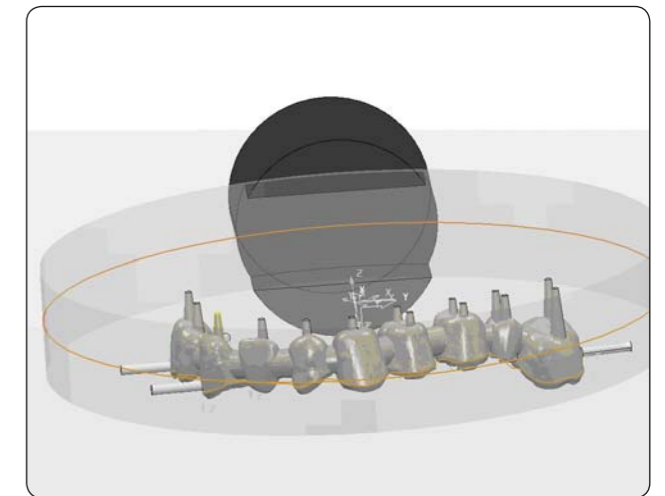
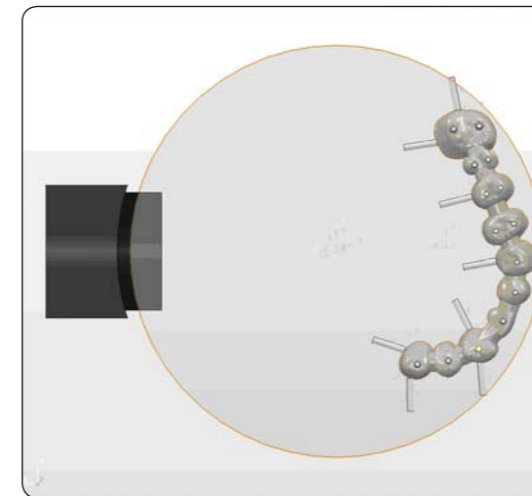
The user can choose modifications regarding the material and dental care, e. g. shrinking factor, blank types, etc..

Optimal milling strategies for the dental care are possible to select, such as, for instance, a bridge. These preset milling strategies are in daily use at R+K CAD/CAM and provide highest precision.

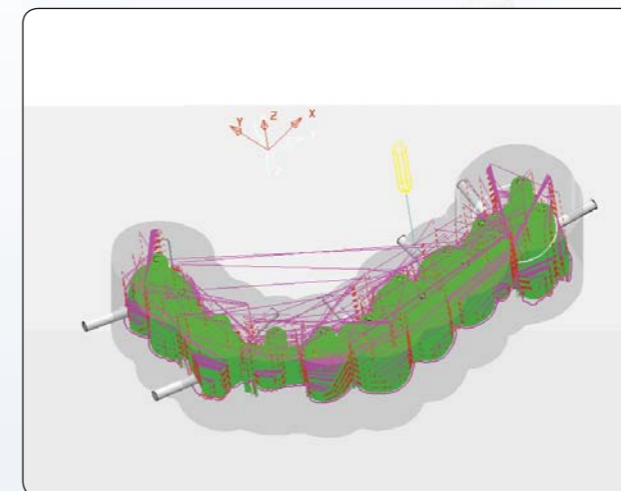


Easy material- and blank administration

OrganicMill (Milling Software)



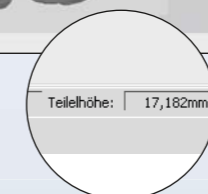
After having positioned the object, it is designed with supporting pins. Any material can be selected. (Retention)



Only very minimal retouching work is required because of optimized milling strategies. The smooth and quiet running of the milling machine offers an excellent long-life quality of the mechanic components as well as the milling burs, with perfect results.



Initial position:
Height min. 17.18 mm



After optimal rotation in blank:
Height 13.63 mm =
Reduced material- and time factor



By repositioning the framework into the blank, thinner blanks can be used for the same work. The possibility of milling products that so far could not be carried out due to the size of the blank can now be milled without any obstacles. Thus material wastage, milling time and costs are considerably reduced.

Milling Machine 4X



Machine construction made in Germany!

Sealing air in the axes



Tool holder, consisting of 16 plug-in-positions and a linear dimension switch-key, used to measure the exact tool length and for breakage inspection.



4-axial blank intake (rotating 360°)

The two blank intakes can execute two milling orders in succession. The automatic overnight operation offers a higher productivity.

Therefore, up to 60 units (crowns and bridges) can be produced from two different kinds of materials (plastic material, zirconium) and sizes.



Access for the exhaust system to absorb the material remainder, as well as for the manual exhaust of the machine after the processing.



Remote control for manual machine operation.



Organical milling machines

ORGANICAL
4X-M

Made in Germany

NEW



Article-No.: 70-1050

**4-axial
metal milling machine
with air cooling**



Technical data ORGANICAL 4X-M:

Axes: XYZ (axes control) & A (engaged axis) automatically driven to all axial positions
 Rotation of shaft: max. 60,000 rotations/minute
 Feed motion: max. 15 m / minute
 Performance of shaft: 1 kW
 Milling time: on average 18 min per dental unit
 Weight: ca. 750 kg
 Dimensions: 1.19 x 1.88 x 0.83 m (w x h x d)
 Blank holder: 2
 Further Characteristics: material variety, many kinds of blanks, smooth running, high feed motion, open interfaces, dry milling with air cooling, blank exchange with one hand grip, automatic milling bur exchange, 15 plug-in positions, overpressure in the axes to avoid blockages, machine equipped with high quality components made in Germany.

Can be separated as two devices for small rooms (on request, larger effort for assembly, height of upper part: 1.13 m, height vanity unit: 0.86 m)

ORGANICAL
4X-T

Made in Germany



Article-No.: 70-1000

**4-axial
dry milling machine**



Technical data ORGANICAL 4X-T:

Axes: XYZ (axes control) & A (engaged axis) automatically driven to all axial positions
 Rotation of shaft: max. 60,000 rotations/min.
 Feed motion: max. 15 m/min.
 Performance of shaft: 300 W
 Milling time: on average 18 min per dental unit
 Weight: ca. 750 kg
 Dimensions: 1.19 x 1.88 x 0.83 m (w x h x d)
 Blank holder: 2
 Further characteristics: material variety, many kinds of blanks, smooth running, high feed motion, open interfaces, dry milling, blank exchange with one hand grip, automatic milling bur change, 15 plug in positions, overpressure in the axes to avoid blockages, machine equipped with high quality components made in Germany.

First delivery: August 2007

Can be separated as 2 devices for small rooms (on request, larger effort for assembly, height upper part: 1.13. m, vanity unit: 0.86 m)

ORGANICAL
4X-T DESKTOP

Made in Germany



Article-No.: 70-1010

**4-axial
desktop milling
machine
for dry milling**



Technical data ORGANICAL 4X-T DESKTOP:

Axes: XYZ (axes control) & A (engaged axis)
 Rotation of shaft: max. 60,000 rotations/min.
 Feed motion: max. 8 m/min.
 Performance of shaft: 300 W
 Milling time: on average 20 min per dental unit
 Weight: ca. 230 kg
 Dimensions: 0.98 x 0.78 x 0.79 m (w x h x d)
 Blank holder: 1
 Further characteristics: material variety, many kinds of blanks, smooth running, high feed motion, open interfaces, dry milling, blank exchange with one hand grip, automatic milling bur change, 8 plug in positions, overpressure in the axes to avoid blockages, machine equipped with high quality components made in Germany.

First delivery: June 2008

Organical Tools



Made in Germany



Article-No.: 70-1900

Basic equipment material and tools

70-1900

for Organical 4X-T, Organical 4X-T Desktop and Organical 4X-M

No.	Art-No.	Description	Organical 4X-T	Desktop 4X-T	Organical 4X-M
Tools					
1	70-1903	Adhesive device	1 x	1 x	1 x
2	70-1908	Milling adjusting device	1 x	1 x	1 x
3	70-1902	Grease gun THK	1 x	1 x	1 x
4	70-1909	Blank magazine	1 x	1 x	2 x
5	70-1901	Bracket lubricant	1 x	1 x	1 x
6	68-1250	Zirconium polishing paste 30 g	1 x	1 x	1 x
7	70-1904	Oiling set Jaeger	1 x	1 x	1 x
8	70-1910	Chuck guard	1 x	-	1 x
9	70-1912	USB-cable	1 x	1 x	1 x
10	68-1300	Scaling rings	1 x	1 x	1 x
11	70-1905	Switchboard key	1 x	1 x	1 x
12	70-1911	Cleaning brush	1 x	1 x	1 x
13	70-1907	Hammer 200 g	1 x	1 x	1 x
14	70-1906	Set of Allen keys	1 x	1 x	1 x
	70-1913	Dinamometric key	-	-	1 x
	70-1907/M	Fibre hammer	-	-	1 x
	70-1908/G	Milling adjusting device for 6 mm shank milling cutter	-	-	1 x
Burs					
15	68-1012	Plastic Material Ø 1,0 mm	2 x	1 x	1 x
16	68-1011	Plastic Material Ø 2,0 mm	2 x	1 x	1 x
17	68-1010	Plastic Material Ø 3,0 mm	2 x	1 x	1 x
18	68-1002	Zirconium Ø 2,5 mm	2 x	1 x	1 x
19	68-1000	Zirconium Ø 1,0 mm	2 x	1 x	1 x
	68-1051	Composite Ø 1,0 mm	-	-	2 x
	68-1052	Composite Ø 2,0 mm	-	-	2 x
	68-1053	Composite Ø 3,0 mm	-	-	1 x
	68-1041	Octa-C (Non precious alloy) Ø 1,0 mm	-	-	2 x
	68-1042	Octa-C (Non precious alloy) Ø 2,0 mm	-	-	2 x
	68-1043	Octa-C (Non precious alloy) Ø 3,0 mm	-	-	1 x

No.	Art-No.	Description	Organical 4X-T	Desktop 4X-T	Organical 4X-M
Organic-Blanks					
20	67-1000	Zirconium translucent T10	1 x	-	-
20	67-1001	Zirconium translucent T14	2 x	1 x	1 x
20	67-1002	Zirconium translucent T18	1 x	1 x	1 x
20	67-1003	Zirconium translucent T22	1 x	1 x	-
21	67-1101	Zirconium opaque T14	1 x	1 x	1 x
22	67-3000	PMMA T16 A2	1 x	1 x	1 x
22	67-3100	PMMA T16 A3	1 x	-	-
22	67-3200	PMMA T16 B1	1 x	-	-
23	67-3300	PMMA T16 burn	1 x	1 x	1 x
24	67-3402	Composite T18 A2	-	-	1 x
25	67-3310	Wax grey T18	1 x	1 x	1 x
	67-2100	Octa-C (Non precious alloy) Ø 98,5 mm T10	-	-	1 x
	67-2101	Octa-C (Non precious alloy) Ø 98,5 mm T12	-	-	1 x
	67-2102	Octa-C (Non precious alloy) Ø 98,5 mm T13,5	-	-	1 x
Blank holder					
26	68-1401	Zirconium T10	1 x	1 x	1 x
26	68-1402	Zirconium T14	3 x	1 x	1 x
26	68-1403	Zirconium T18	3 x	1 x	1 x
26	68-1404	Zirconium T22	1 x	1 x	1 x
26	68-1405	Zirconium T26	1 x	1 x	1 x
26	68-1421	PMMA T16	1 x	1 x	-
26	68-1422	PMMA T18	1 x	1 x	-
	68-1437	Plastic material, poly T16	-	-	1 x
	68-1438	Plastic material, poly T18	-	-	1 x
	68-1470	Uni Metal	-	-	4 x



Article-No.: 70-1300

Zirconium-particulate matter exhaust incl. absorbing duct and teflon filter for Organical 4X-T and Organical Desktop

Technical data:

Weight: 100 kg
Dimensions: 0.40 x 0.96x 0.43 m (w x h x d)



Artikel-Nr. 70-1200

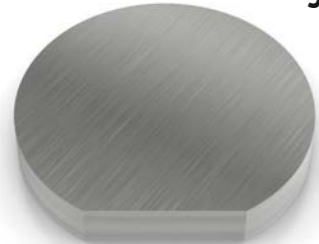
Special sintering furnace Organical Heat for Zirconium

Technical data Organical Heat:

Weight: 90 kg
Dimensions: 0.73 x 0.81 x 0.60 m (w x h x d)
Chamber volume: ca. 5.2 l; ca. 3.5 l useable volume
Stack height: 100 mm
Contact surface (width across flats): 140 mm
Multi level setting and cap free burning possible

Organical Blanks

Organic Non Precious Alloy



Heights
10 mm
12 mm
13,5 mm
15 mm

Ø 100 mm

Composition
Co 61,1 %
Cr 32,0 %
Mo 2,5 %
Si 0,7 %
Mn 0,7 %

Organic Non Precious Alloy

67-2100 Blank 10 mm
67-2101 Blank 12 mm
67-2102 Blank 13,5 mm
67-2103 Blank 15 mm

Organic Pure Titanium



Heights
10 mm
12 mm
13,5 mm
15 mm

Ø 100 mm

Composition
Ti 99,9 %

Organic Pure Titanium

67-2010 Blank 10 mm
67-2011 Blank 12 mm
67-2012 Blank 13,5 mm
67-2013 Blank 15 mm

Organic Titanium Niobium



Heights
10 mm
12,5 mm
15 mm
17,5 mm

Ø 100 mm

Composition
Ti 86,9 %
Nb 6,5 - 7,5 %
Al 5,5 - 6,5 %
Ta < 0,5 %
Fe < 0,25 %
O < 0,2 %
C < 0,08 %
N < 0,05 %
H < 0,009%

Organic Titanium Niobium

67-2000 Blank 10 mm
67-2001 Blank 12,5 mm
67-2002 Blank 15 mm
67-2003 Blank 17,5 mm
67-2004 Blank 18 mm

Organic Zirconium translucent



Organic Zirconium opaque

Heights
10 mm
14 mm
18 mm
22 mm
26 mm

Ø 100 mm

Composition translucent
ZrO₂/HfO₂/Y₂O₃ >99,0 wt%
Y₂O₃ 4,5-5,5 wt%
HfO₂ <5,0 wt%
Al₂O₃ <0,1 wt%
<0,5 wt%

Composition opaque
as translucent, but:
Al₂O₃ 0,2-0,3 wt%
Other oxides <0,5 wt%

Organic Zirconium translucent

67-1000 Blank 10 mm
67-1001 Blank 14 mm
67-1002 Blank 18 mm
67-1003 Blank 22 mm
67-1004 Blank 26 mm

Organic Zirconium opaque

67-1100 Blank 10 mm
67-1101 Blank 14 mm
67-1102 Blank 18 mm
67-1103 Blank 22 mm

Properties translucent

- Yttrium stabilised, nano crystalline, isostatically pressed zirconium oxide
- dyeable
- fine grain structure
- for large constructions, translucent appearance for natural, not discoloured tooth stumps

Properties opaque

- Yttrium stabilised mix, nano crystalline, isostatically pressed zirconium oxide
- dyeable
- fine grain structure
- for large constructions, opaque appearance for abutments and very discoloured tooth stumps

Organic PMMA A2, A3, B1



Heights
16 mm

Ø 100 mm

Composition
Highly cross-linked
Polymethylmethacrylate
Methylmethacrylate > 1%

Organic PMMA A2

67-3000 Blank 16 mm

Organic PMMA A3

67-3100 Blank 16 mm

Organic PMMA B1

67-3200 Blank 16 mm

Organical Blanks + Accessories

Organic PMMA Burn (Acrylic)



Heights
16 mm

Ø 100 mm

Composition
Polymethylmethacrylate,
Polyalkylmethacrylate (Copolymerisat)*,
Derivatives of barbituric acid,
Opacifier perylene and ferric oxide
pigments, Methylmethacrylate, Cross
linking agent
In traces: quaternary ammonium salt,
copper -I-salt, stabilizers, screening
agent

Organic PMMA Burn
67-3300 Blank 16 mm

Characteristics
- residue free burn out plastic material

Organic Wax grey, transparent



Heights
18 mm

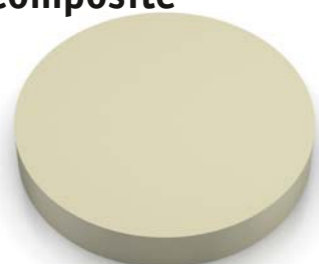
Ø 100 mm

Composition
Synthetic wax

Organic Wax, grey
67-3310 Blank 18 mm

Organic Wax, transparent
67-3312 Blank 18 mm

Organic Composite A2, A3, B1



Heights
18 mm

Ø 98 mm

Composition
1,4-Butanediol Dimethacrylate
Urethane Dimethacrylate bis - GMA

Organic Composite A2
67-3402 Blank 18 mm

Organic Composite A3
67-3403 Blank 18 mm

Organic Composite B1
67-34001 Blank 18 mm

Blank support + Chuck Guard

Fig. 50 %



Work part intake plastic material

68-1421 Work part intake 10 mm

Work part intake zirconium

68-1401 Work part intake 10 mm
68-1402 Work part intake 14 mm
68-1403 Work part intake 18 mm
68-1404 Work part intake 22 mm
68-1405 Work part intake 26 mm

Work part intake metal

68-1430 Work part intake 10 mm
68-1432 Work part intake 12 mm
68-1433 Work part intake 13,5 mm
68-1435 Work part intake 15 mm

Chuck Guard

70-1910 Chuck Guard

Special Burs



Characteristics
- Special coating
for each material

Bur zirconium

68-1000 1. Bur 1,00 mm Ø
68-1002 2. Fräser 2,50 mm Ø

Bur plastic material

68-1010 3. Bur 1,00 mm Ø
68-1011 4. Bur 2,00 mm Ø
68-1012 5. Bur 3,00 mm Ø

Bur metal

68-1041 6. Bur 1,00 mm Ø
68-1042 7. Bur 2,00 mm Ø
68-1043 8. Bur 3,00 mm Ø

Bur composite

68-1051 9. Bur 1,00 mm Ø
68-1052 10. Bur 2,00 mm Ø
68-1053 11. Bur 3,00 mm Ø

Organical Accessories

Preparation set for Dentists



Properties
Especially compiled for scanable geometries

Bur set
68-1100 Preparation set for Dentists

Zirconium Polishing paste



Processing
For pre polishing and mirror finish of ceramic and zirconium

Zirconium Polishing paste
68-1250 Zirconium Polishing paste, 30 ml

Adhesive and Milling adjusting device

Abb. 30%



Adhesive device
- made of steel
- fitting for precise fixation of the blank in the Work Part Intake

Milling adjusting device
- made of steel
- for the optimum adjustment of the burs for our milling machine.

Adhesive device
68-1450 Adhesive device

Milling adjusting device
68-1451 Milling adjusting device

Milling adjusting device

Milling adjusting device

Parallel bur + Water turbine



Parallel bur for full ceramic
Consisting of:
- Schick S1 basic device
- NSK Presto Aqua II Water Turbine
- Model desk and collecting pan
- model holder
- Adapter for NSK

Parallel bur for full ceramic
70-1410 Parallel bur for full ceramic

Water turbine
70-1420 NSK Presto Aqua II Water turbine

Organical Desktop Machine Table



Properties
- sturdy frame (powder coated)
- adjustable feet

Organical Desktop Machine Table
70-1011 Base table for the milling machine Organical-Desktop

Organical Accessories / Scan casings

Ankylos/Schütz-Impla + Camlog Ø 5,0 + 6,0



Scan casings

84-0370 1. Ankylos/Schütz-Impla
84-0348 2. Camlog Ø 5,0 + 6,0

Astra 20° + 45°



Scan casings

84-0124 3. Astra 20°
84-0134 4. Astra 45°

Nobel Biocare Mirus-Cone Ø 4,8 RP + Ø 6,0 WP



Scan casings

84-0375 5. Noble Biocare
Mirus-Cone Ø 4,8 RP
84-0376 6. Noble Biocare
Mirus-Cone Ø 6,0 WP

Frialit MP 2 + Straumann Narrow Neck



Scan casings

84-0304 7. Frialit MP2
Ø 3,4 + Ø 3,8 / Ø 4,5 / Ø 5,5
84-0361 8. Straumann Narrow Neck

Straumann SynOcta 1,5 + WN



Scan casings

84-0301 9. Straumann SynOcta 1,5
84-0362 10. Straumann SynOcta WN

Advance notice

Organical 5X – the 5-axial milling machine with air cooling

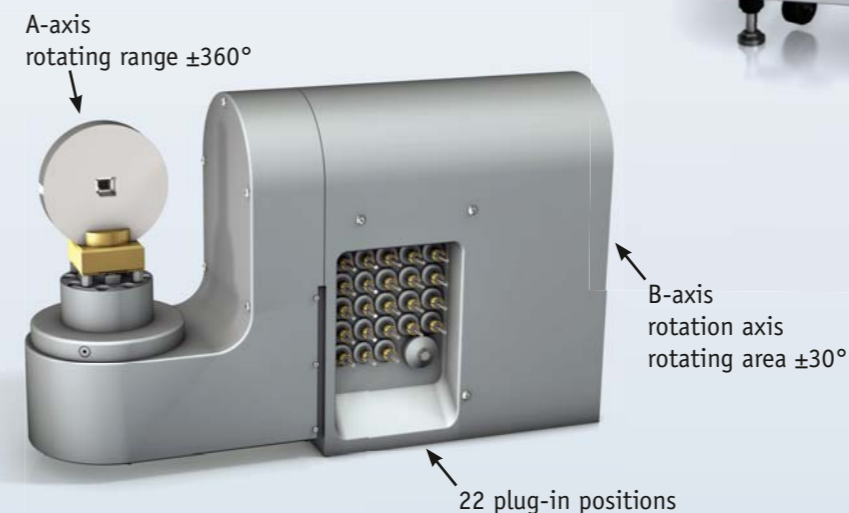
The solution for every challenge!

Technical data ORGANICAL 5X:

Axes: XYZ-axes (controlled axes)
 B-axis (rotation axis)
 A-axis (engine axis)
 All axes automatically driven
Rotation of spindle: max. 60,000 rotations/minute
Feed motion: max. 15m/minute
Power of spindle: 1 kW
Milling time: 18 minutes per dental unit on average
Weight: ca. 800 kg
Dimensions: 1.19 x 1.88 x 0.83 (W x H x D)
Further Characteristics: material variety, many types of blanks, smooth running, high motion, open interfaces, dry processing with air cooling, blank change with one hand grip, automatic bur exchange, compressed air in the axes to avoid blockages, machine with high quality components, made in Germany.



Special features: - Auto calibration
 - Definitions of tools
 endurance and sister tools



**Soon available
at our house**

EC Certificate

mdc medical device certification GmbH
Notified Body 0483
herewith certifies that



**R+K CAD/CAM
Technologie GmbH & Co. KG
Ruwersteig 43
12681 Berlin
Germany**

for the scope
milling blanks of titanium, zirconium oxide,
non precious alloys and polymethyl methacrylate
has introduced and applies a

Quality System

for the manufacture of the products concerned and carries out a
final inspection as specified in Annex V, Section 3.

The mdc audit has proven, that this quality system
meets all requirements according to

**Annex V – Section 3
of the Council Directive 93/42/EEC**

of 14 June 1993 concerning medical devices.

The surveillance will be held as specified in Annex V, Section 4.

This certificate is valid until: 2012-10-29
Certificate registration no.: 1310.03.01/2
Stuttgart 2008-10-14

Head of
Certification Body



mdc medical device certification GmbH
Kriegerstraße 6
D-70191 Stuttgart, Germany
Phone: +49-(0)711-253597-0
Fax: +49-(0)711-253597-10
Internet: <http://www.mdc-ce.de>



Akkreditiert durch
Zentralstelle der Länder
für Gesundheitsschutz
und Medizinprodukte
ZL0-Z0-976.9405

For electronic publication only

Certificate

mdc medical device certification GmbH
certifies that



**R+K CAD/CAM
Technologie GmbH & Co. KG
Ruwersteig 43
12681 Berlin
Germany**

for the scope
manufacture of preliminary products of dental prosthesis and
manufacture of dental prosthesis
has introduced and applies a

Quality Management System

The mdc audit has proven, that this quality management system
meets all requirements of the following standard

EN ISO 13485

Medical devices – Quality management systems –
Requirements for regulatory purposes
(ISO 13485:2003)

This certificate is valid until: 2012-10-17
Certificate registration no.: 1310.48.01/0
Stuttgart 2007-10-17

Head of
Certification Body



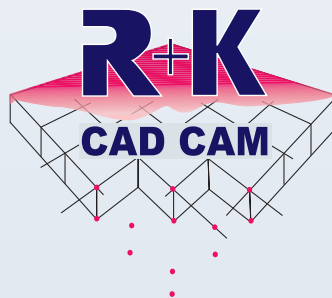
mdc medical device certification GmbH
Kriegerstraße 6
D-70191 Stuttgart, Germany
Phone: +49-(0)711-253597-0
Fax: +49-(0)711-253597-10
Internet: <http://www.mdc-ce.de>



Akkreditiert durch
Zentralstelle der Länder
für Gesundheitsschutz
und Medizinprodukte
ZL0-Z0-976.00.03-46

For electronic publication only

As we continuously strive towards improving our products regarding the technological progress, changes of the products and models as described and shown in this catalogue are possible, to your advantage.



R+K CAD/CAM Technologie GmbH & Co. KG

Ruwersteig 43
12681 Berlin (Germany)

Tel: +49 (0)30 549934-146 | Fax: +49 (0)30 54378432 | info@cctechinik.com | www.cctechinik.com